

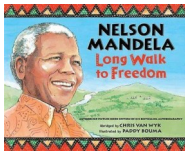
A warm welcome to Barley Class. We hope you had an enjoyable and restful summer break. The Year 6 teacher this year is Mrs Palfreyman and you may have already met the supporting staff: Mrs Kaur and Mrs Mamujee.

In the first half of this term our topic is History focused. The children will be learning about apartheid in South Africa and some of the key figures involved, such as Nelson Mandela. Our English units will take inspiration from this topic and will be based upon related texts. In Science, we will be learning about light, how light travels and how it helps us see as well as living things and their habitats, including classification and animal groups.

We hope that your child is settling into Barley Class happily, please do let us know if there is anything more we can do to support your child. Please do not hesitate to ask about any aspect of your child's work and experiences at school.

### English:

Autumn 1, our writing will be linked to our history topic about apartheid. We will be writing a biography of Nelson Mandela's life.

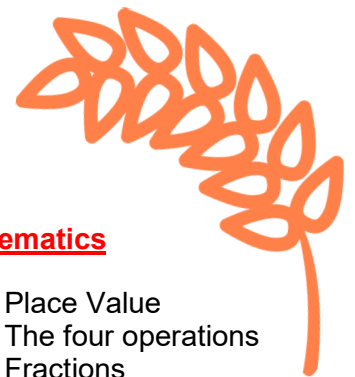


### Home Learning:

Children will take home their English and Maths homework on a Friday, to be handed in the following Friday. If your child needs support with this, adults in school are happy to work with them to help.

We would also like the children to complete the following tasks each week as home learning:

- Children should complete their 5 weekly garage games on Times Table Rockstars, as well as the weekly fluency worksheets. This term's fluency targets are to be confident with their **times tables**, learn **square numbers** up to 12x12 and to recall **prime numbers** to 100. Fluency will be tested on **Fridays**.
- Spellings -Children will receive new spelling lists on a Friday to take home and learn. These will be tested on the following **Friday**.
- Reading -Each child should have a reading book which they should aim to read throughout the week. Reading should be logged with a detailed written response at least **5** times a week in their reading diaries.



### Mathematics

- Place Value
- The four operations
- Fractions
- Geometry—Position and direction

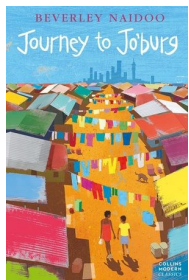
### Personal, Social, Health and Emotional Development

In PSHE this half term we will be looking at relationships.

### Religious Education

The overarching key question for the first half term is: **How far is belief in the resurrection important to Christians today?**

In Autumn 2 we will be exploring: **How and why do Christians try to make the world a better place?**



In Autumn 2, our writing will continue to build on our History topic. We will be writing persuasive letters based on the story Journey to Jo'burg.

**PE Day is a Tuesday** —Please make sure all children bring the correct kit.

Please remember that the black CTS hoodies are for PE days only.

